

SKIMMER

400 AN R/C AIRBOAT FOR SPEED 400 MOTORS

Designed by GLYNN GUEST

DRIVER FIGURE-LIGHTWEIGHT DOLL OR CARVE FROM FOAM

CAPPING STRIP ADDED AFTER SHEETING

CARD SPRAY DEFLECTOR

BOWPIECE

BULKHEAD

146

383

BOTTOM SHEET 3mm X-GRAIN

TRANSOM

70

HULL SIDE

BOWPIECE

115

100

BULKHEAD

3mm x 12mm SUPPORT STRIPS

RUDDER SOCKET

HULL SIDE 6mm BALSAs 2 REQ.

38

38

TRANSOM 6mm BALSAs

38

32

MOTOR PYLON 10mm BALSAs

63

BULKHEAD 6mm BALSAs

25

25

BOWPIECE 6mm BALSAs

12

12

153

TRANSOM REINF.

6mm BALSAs

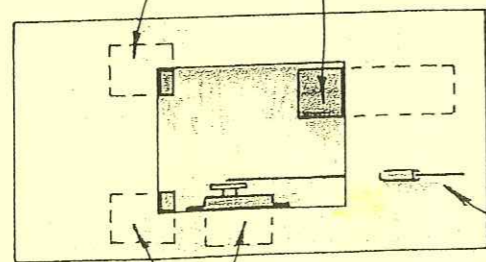
32

50

RECEIVER

NICAD PACK

SUGGESTED LAYOUT OF R/C EQUIPMENT. ADJUST FOR BALANCE (SEE TEXT)



SPEED CONTROLLER

RUDDER SERVO

RUDDER LINK THROUGH TUBE IN DECK

RUDDER LAMED FROM SHEET R DOWEL. SAME CARVE TO SH

RUDDER HORN

BRASS TUBE

ALU. BRACKET SECURED WITH SCREWS

PYLON

ALU. MOTOR STRAP (MUST NOT COVER SLOTS IN MOTOR CAN)

SECURING BOLTS/NUTS

S400 MOTOR

TOP RUDDER BEARING

MOTOR PYLON

WIRE PROP GUARD

HOOFS FOR BANDS

GLUE ENDS INTO DECK

DIAGONAL BRACE FOR EXTRA STIFFNESS

BALSAs SEAT

TONGUE 380

3mm HATCH

WIRE SUPPORTS